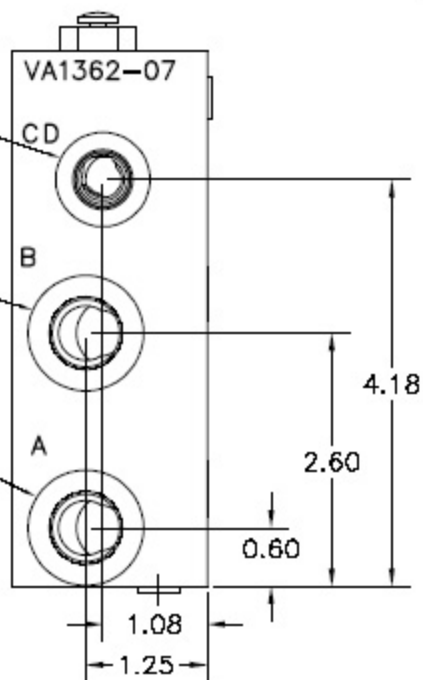


SAE #06 PORT  
9/16"-18 UNF THREAD  
2 PLACES

SAE #08 PORT  
3/4"-16 UNF THREAD  
2 PLACES

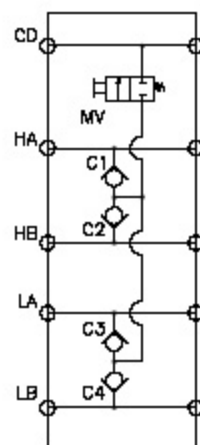
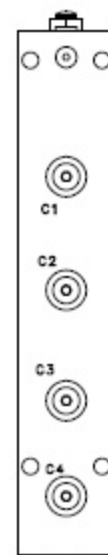
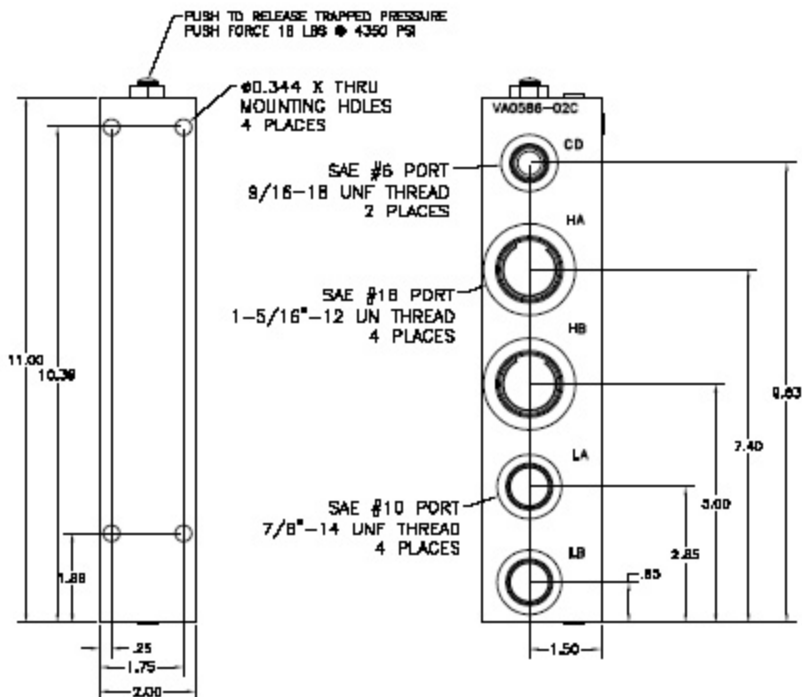
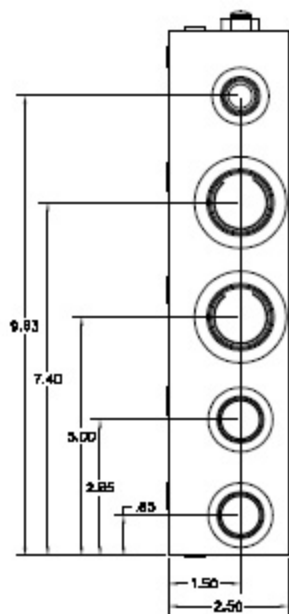
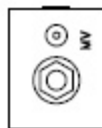
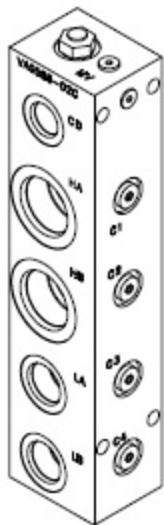
4X #0.344  $\Psi$  THRU  
MOUNTING HOLES

SAE #08 PORT  
3/4"-16 UNF THREAD  
2 PLACES



NOTE:

1. BODY MATERIAL: 11L17 STEEL.
2. MAX OPERATING PRESSURE: 4350 PSI



- NOTES:  
1. BODY MATERIAL: 11L17 STEEL  
2. MAX OPERATING PRESSURE: 4350 PSI